

## BE-IN

**BE-IN: Best Innovative Practices for Inclusive and Emotional Education  
to face early school leaving in Europe.**

**2022-24**

**6th Newsletter BE-IN October 2023**

### **THE FINAL PUBLICATION**



### **The Final Publication is Online**

The Be-In project is drawing to a close and the final publication is finally ready for dissemination.

The results achieved are really important, and show how important social-emotional skills are for a successful school career.

**The final Indicators:**

*6 Published Courses*

*270 teachers enrolled*

*140 teachers completed teachers's training*

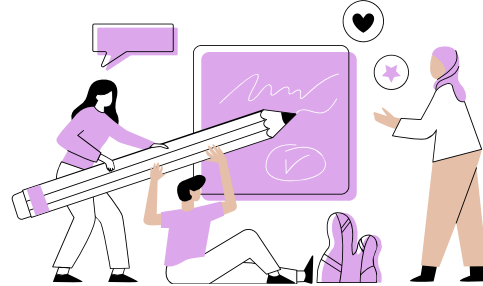
*198 questions*

*15 hub schools*



# The content of Publication

## TABLE OF CONTENTS



01

Introduction

4

02

The Theoretical Method and Approach Adopted by the BE-IN Project

7

03

The European BE-IN Project Schools' Context

12

04

The BE-IN Inclusive and SEL Teachers' Training Course and Digital Platform

16

05

Testing the Teacher's Training Program in the Partner Countries

26

06

Testing the BE-IN inclusive and Socio-Emotional Activities in the Classroom with Students in the Five Partner Countries

36



07

Resources of the Project

42

08

Recommendations and Sustainability

47

09

References

53

**In the final publication, we covered all the various project phases, the results achieved and the outputs produced. The success of the project is highlighted by the numbers achieved in terms of beneficiaries, enrolment in the course is in fact continuing even after the testing phase and 99% of teachers will continue to use the materials during the school year. Below we report the recommendations collected from our experience.**





# The Recommendation

## KEY RECOMMENDATION FOR TEACHERS

- teachers should expand their knowledge of social-emotional learning by familiarising themselves with the methods, values, and ideas behind it
- teachers provide opportunities for group work and cooperative activities in the classroom
- teachers should use the scaffolding method to best support student learning.
- teachers understand and improve the emotional relationship between themselves and their students.

## KEY RECOMMENDATION FOR SCHOOL

- school administrators support teachers in implementing activities related to SEL and inclusive education
- they should make a greater effort to accommodate vulnerable students and students with additional needs

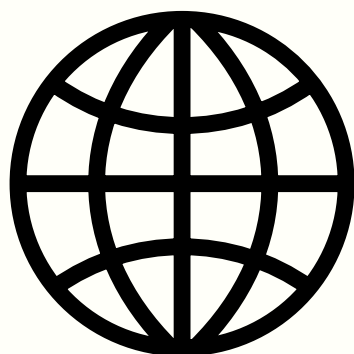




# FOLLOW US:



**[www.facebook.com/Be-in](https://www.facebook.com/Be-in)**



**[be-ineducation.eu](https://be-ineducation.eu)**

## CONTACT US

**<https://be-ineducation.eu/contact-us/>**



**Co-funded by  
the European Union**

Funded by the European Union. Views and opinions expressed are however those of the author(s) only and do not necessarily reflect those of the European Union or the European Education and Culture Executive Agency (EACEA). Neither the European Union nor EACEA can be held responsible for them. (Project Code:2021-1-IT02-KA220-SCH-000032833)