



Funded by
the European Union

BE-IN: Best Innovative Practices for an Inclusive and Emotional Education to face early school leaving in Europe



FOCUS

Step 3

anthro polis



Information



This is the analysis phase. The teacher assigns challenging tasks to be performed on the initial text. To include all students the task should be stratified from simpler to more complex and challenging activities.

Stratify

You can stratify the activities by offering:

- True/false activity
- Multiple choice activity
- True/false/not given activity

These activities help the students focus on content and meaning. It is important to give them the correct answers for self-check and not provide the answers before moving on to the next activity. This is essential as it keeps the affective filter low and shows students they are not evaluated. It enhances the "*I can do it*" feeling and promotes self-awareness.

The students can then correct their answers and re-establish focus before moving on with other more structured activities.



Interactive schemes

Individual, jigsaw, pairs, small group.

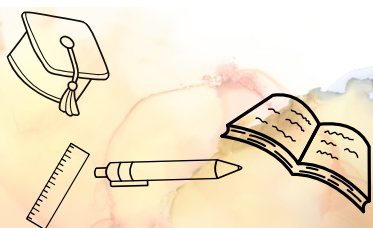
Place

Class, lab.

More examples and inspiration

For more examples and inspiration you can visit BE-IN's Topic 6 "Environment and I" or view it on [BlendSpace](#).

You can also find examples of activities in the "Remarkable Products" stratified unit example.



anthropolis



CITIZENS
IN POWER



FORUM FOR
FREEDOM IN
EDUCATION



OXFAM
Italia
Intercultura

SÜDWIND



BE-IN



Funded by
the European Union

The BE-IN project is co-financed by the ERASMUS+ programme of the European Union. It's content reflects the views of the authors, and the European Commission cannot be held responsible for any use which may be made of the information contained therein (Project Code:2021-1-IT02-KA220-SCH-348DE244).